



## Acme Sanitary Ware Co Ltd

Acme Building, 22-28 Nanking Street, Kowloon, Hong Kong  
 Tel: 2388 7171 Fax: 2710 8012  
 E-mail: acme@acmesanitary.com.hk  
 Website: www.acmesanitaryware.com.hk



Pure Freude  
an Wasser

PROJECT		REF		REV	ITEM CODE	
LOCATION		DATE			PAGE	

## SANITARY WARE SPECIFICATION SHEET

Item Descriptions	GROHE (Germany) "Eurosmart" Chrome plated single lever basin mixer 1/2" M-size	Illustration/ Drawing
Dimensions	L110 x W48 x H199 mm	 <div>  </div>
Model	2339510E	
Finish / Material	Chrome Plated	
Country of origin	Thailand	
Manufacturer	GROHE Limited	
Supplier	Acme Sanitary Ware Co. Ltd Mr. Eric Wong/ Mr. Don Yuen	
Contact Tel/Fax	(852) 2388-7171 / (852) 2710-8012	
E-mail	acme@acmesanitary.com.hk	
Website	www.acmesanitary.com.hk	
<b>"Eurosmart"</b> <b>Basin mixer 1/2" M-Size</b> <ul style="list-style-type: none"><li>• monobloc installation</li><li>• metal lever</li><li>• <b>GROHE SilkMove ES</b> 28 mm ceramic cartridge with energy saving function via cold start</li><li>• with temperature limiter</li><li>• <b>GROHE StarLight</b> chrome finish</li><li>• <b>GROHE EcoJoy</b> mousseur 5.7 l/min</li><li>• <b>GROHE FastFixation</b> rapid installation system</li><li>• smooth body</li><li>• flexible connection hoses</li></ul> 		
		

Note:  [Grohe 2339510E](https://www.youtube.com/watch?v=BYRMESXcVEY) <https://www.youtube.com/watch?v=BYRMESXcVEY>

\* All information of the above is for the reference only. No prior notice is made if any changes.



## Acme Sanitary Ware Co Ltd

Acme Building, 22-28 Nanking Street, Kowloon, Hong Kong  
Tel: 2388 7171 Fax: 2710 8012  
E-mail: acme@acmesanitaryware.com.hk  
Website: www.acmesanitaryware.com.hk



Pure Freude  
an Wasser

PROJECT		REF		REV	ITEM CODE	
LOCATION		DATE			PAGE	

## SANITARY WARE SPECIFICATION SHEET

### GROHE EUROSMART

#### GROHE'S NUMBER 1 IN PREMIUM PERFORMANCE

For almost 2 decades, its legendary quality has made the GROHE's Eurosmart range the obvious choice for planners, architects and plumbers. Making it the number 1 worldwide with over 30 million sold. With its wide range of designs and functionalities, its long-lasting GROHE SilkMove Technology and German engineering know-how, Eurosmart is valued for every kind of project – bath, kitchen, commercial, large-scale or small. Eurosmart: always a first class choice since 1999.



#### GROHE SilkMove cartridge technology for smooth handling

This premium tap comes with a continuously variable water temperature and volume adjustment technology, ensuring effortless lever operation even after years of use.



#### Easy to clean thanks to the GROHE StarLight chrome coating

Just wipe the tap down with a dry cloth – the ultra smooth surface finish is scratch resistant and ensures a lasting luminous sheen. You'll save plenty of time cleaning while your tap always looks shiny and new.



#### GROHE EcoJoy with water-saving function for reduced consumption

GROHE EcoJoy reduces water consumption by up to 50% without compromising on performance. Whenever you turn on your tap, you will enjoy a full jet of water while saving money nonetheless.

#### Medium-height spout

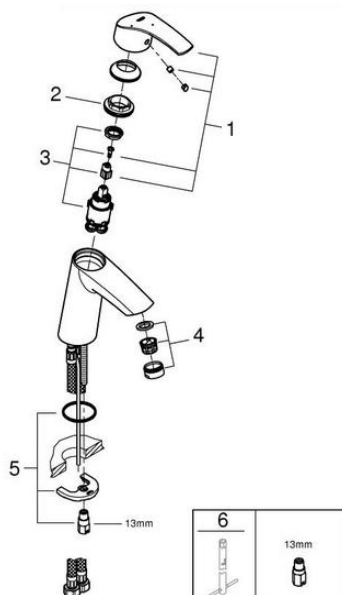
For accessibility and convenience

#### Smooth tap body with no waste

#### EcoJoy technology

Reduces water consumption by up to 50%

#### Quick and easy installation



Pos.-nr.	Prod. description	Order-nr.
1	lever	46865000
2	Fitting ring	46715000
3	Cartridge	46580000
4	Mousseur	48159000
5	Shank fastening assembly	46249000
6	Mounting wrench	19017000*

\* Optional accessories

Note:

\* All information of the above is for the reference only. No prior notice is made if any changes.